

Boosting Innovation

How S/4HANA Cloud Empowers Your Business beyond By Design & Capabilities



In such a highly competitive landscape, selecting the ideal enterprise resource planning (ERP) system is critical to your business's success. With a plethora of options available, how do you discern the best fit for your business? In this discussion, we delve into a comparison of two of SAP's leading cloud ERP solutions: SAP Business ByDesign and S/4HANA Cloud. Each offers a comprehensive array of features designed to meet diverse business needs, but which one aligns best with your organizational goals?

This article will guide you through the key differences and similarities between SAP Business ByDesign and S/4HANA Cloud, helping you make an informed decision for your business. Let's begin by examining each solution in detail...

SAP S/4HANA Cloud

SAP S/4HANA Cloud is an advanced cloud-based ERP solution designed for mid-sized to large enterprises. It optimizes core business processes such as finance, procurement, manufacturing, and supply chain management through a scalable, integrated system. Key technical benefits include real-time insights, advanced analytics, automation, mobile access, and machine learning, enhancing efficiency, collaboration, and decision-making. It features a user-friendly interface, customizable dashboards, and industry-specific workflows. Unlike traditional ERPs, S/4HANA Cloud ensures faster deployment, lower maintenance costs, and automatic updates, praised for its flexibility and operational optimization capabilities.



SAP Business ByDesign

SAP Business ByDesign is a cloud-based ERP tailored for midsize businesses, offering comprehensive services in financial management, CRM, supply chain management, and project management. It supports real-time analytics and insights for informed decision-making, accessible through a user-friendly interface. Subscription-based pricing allows flexibility in managing expenses, accompanied by robust support from SAP and a wide-ranging feature set tailored to midsize business needs.

Why Choose SAP S/4HANA Cloud Over SAP Business ByDesign?

SAP S/4HANA Cloud empowers businesses beyond the capabilities of SAP Business ByDesign through its advanced modular design, real-time operations, and robust scalability powered by AI and analytics.

Here is a comparison proving S/4HANA cloud is a better option

Advanced Features and Real-Time Insights:

SAP S/4HANA Cloud is designed to streamline core business processes like finance, procurement, manufacturing, and supply chain management, offering real-time insights and advanced analytics. This leads to better decision-making, enhanced efficiency, and improved collaboration through automation, mobile access, and machine learning. In comparison, while SAP Business ByDesign also provides real-time analytics, it lacks the extensive AI and advanced analytical features found in S/4HANA Cloud.

Scalability and Integration:

S/4HANA Cloud is tailored for mid-sized to large enterprises and supports extensive scalability, making it ideal for businesses looking to expand globally and introduce new business models. On the other hand, SAP Business ByDesign is designed primarily for mid-sized businesses with limited scalability. Additionally, S/4HANA Cloud offers a more comprehensive range of functions and industry-specific workflows, providing greater flexibility and customization options.

Deployment Flexibility and Maintenance:

S/4HANA Cloud offers flexible deployment options, including on-premise, cloud, or hybrid solutions, allowing for quicker time-to-value and reduced maintenance costs. Unlike traditional on-premise ERPs, S/4HANA Cloud boasts faster deployment, automatic updates, and lower maintenance costs. SAP Business ByDesign, being a cloud-based solution, lacks the deployment flexibility offered by S/4HANA Cloud.

User Experience and Accessibility:

Both solutions feature user-friendly interfaces and cloud-based accessibility, enhancing operational efficiency. However, user reviews highlight S/4HANA Cloud's flexibility and ability to optimize operations more effectively, thanks to its customizable dashboards and pre-built industry-specific workflows.

Upgrade Cycles and Innovation:

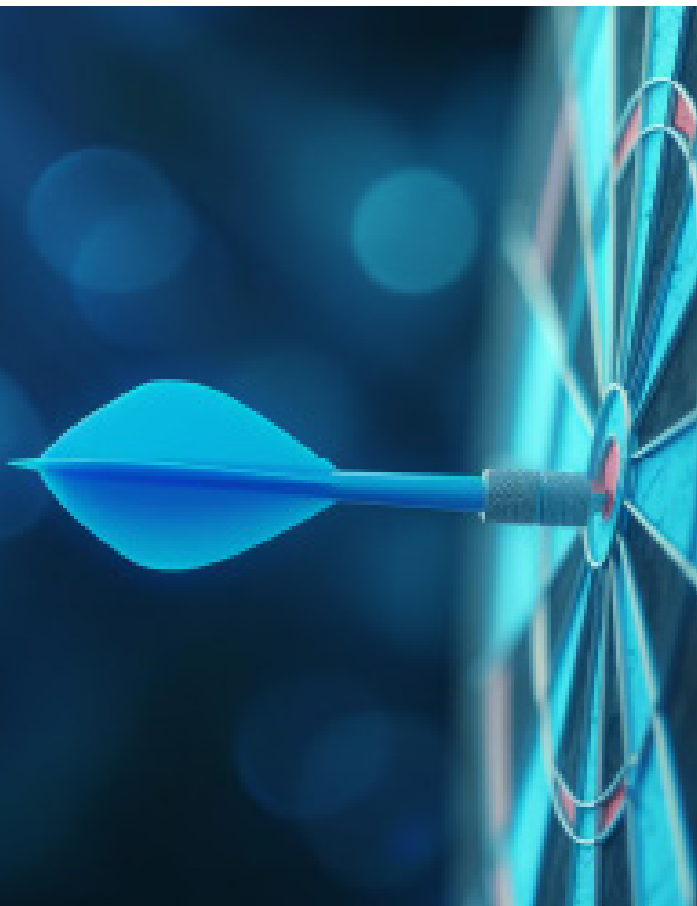
S/4HANA Cloud features faster upgrade cycles with quarterly updates, ensuring rapid access to new features and improvements. In contrast, SAP Business ByDesign typically follows yearly upgrade cycles, resulting in slower innovation and updates.

While SAP Business ByDesign is an excellent option for midsize businesses looking for a comprehensive, scalable solution with flexible pricing, SAP S/4HANA Cloud proves to be the better choice for larger enterprises aiming for long-term innovation and growth. Its advanced features, scalability, flexible deployment options, and faster upgrade cycles make it a more powerful and future-ready ERP solution.

Which One Suits You Best?

Choosing between SAP Business ByDesign and S/4HANA Cloud depends on your business's strategic goals, growth trajectory, and specific functional needs. For optimizing processes with a reliable, scalable solution to address immediate needs and challenges, SAP Business ByDesign is ideal. Conversely, for long-term innovation and growth, SAP S/4HANA Cloud, with its advanced capabilities and real-time insights, is the better choice. Consider your company's objectives and requirements to determine which solution aligns best with your business.

Planning for this strategic shift requires not only evaluating the best fit solution but also aligning with partners proficient in both systems and understanding the intricacies of transitioning between them. This strategic shift in technology necessitates partnerships that can guide you through the journey, ensuring a smooth and effective transformation to S/4HANA Cloud.



Driving Innovation With Best Fit ERP Solution

In conclusion, SAP S/4HANA Cloud emerges as the superior choice for enterprises seeking to transcend the capabilities offered by SAP Business ByDesign. Its advanced modular design, real-time operational capabilities, and robust scalability driven by AI and analytics set it apart. S/4HANA Cloud not only streamlines core business processes with real-time insights and automation but also supports extensive scalability and deployment flexibility, including on-premise, cloud, or hybrid solutions. Faster upgrade cycles and lower maintenance costs further enhance its appeal, making it ideal for enterprises aiming for long-term innovation and growth. Ultimately, the choice between SAP Business ByDesign and S/4HANA Cloud hinges on aligning your business's strategic goals and functional needs with the capabilities of each solution.

Please reach out to Accrete at accrete@acnsol.com / +1 877-849-5838 for any additional information or help that you may need.

USA

7116 252nd Avenue NE
Redmond, WA 98053

Noida

The Iconic Corenthum
1st & 2nd floor, Sector
62, Noida-201301

South Africa

609 Lanseria Corporate
Estate, Falcon Lane,
Lanseria, Gauteng

