

AccreteConsultingSolutions



Transform your
manufacturing operations
using the SAP S/4 HANA

In the dynamic world of manufacturing, efficiency and innovation are paramount, making the choice of ERP software a critical decision. SAP S/4HANA is a leading solution, providing a robust suite of features designed to revolutionize manufacturing operations.

By providing a complete 360-degree understanding of your business, from reliable planning to efficient order processing, SAP S/4HANA empowers manufacturers to make informed decisions, optimize inventory management, reduce lead times, and enhance supply chain efficiency, ultimately boosting profitability and operational excellence.

Let's delve into the core technical aspects of SAP S/4HANA and how it transforms and optimizes manufacturing operations to drive excellence.

How SAP S/4 HANA Optimizing Manufacturing?

Transforming Manufacturing with Real-Time Insights



SAP S/4HANA's in-memory computing architecture revolutionizes data processing speed, allowing manufacturers to gain real-time insights. This transformation leads to faster analytics, streamlined decision-making, and optimized production processes, ensuring that manufacturers can respond swiftly to changing conditions and improve overall operational efficiency.

Achieving Consistency with a Unified Data Model



The unified data model of SAP S/4HANA ensures that all data across the organization is consolidated into a single source of truth. This transformation eliminates data silos, promotes data accuracy and consistency, and facilitates seamless information flow across departments, enhancing collaboration and decision-making.

Enhancing Productivity with an Intuitive Fiori UI



SAP S/4HANA's Fiori UI is designed for simplicity and usability, significantly enhancing productivity. This user-friendly interface encourages quick adoption, provides role-based access to relevant information and tools, and enables users to complete tasks more efficiently, thereby boosting overall productivity.

Making Informed Decisions with Advanced Analytics



Advanced analytics capabilities in SAP S/4HANA empower manufacturers to extract deep insights from their operational data. This transformation enables real-time reporting and data-driven strategic decisions, helping manufacturers optimize their operations, predict future demands, and improve overall performance.

Ensuring Seamless Integration Across the Manufacturing Ecosystem



SAP S/4HANA's seamless integration capabilities connect various systems within the manufacturing ecosystem. This includes integration with legacy systems, IoT devices, supply chain partners, and cloud-based solutions, ensuring a smooth transition, minimizing disruptions, and enhancing overall operational efficiency.

Moving forward we will see how we can implement SAP S/4 HANA in manufacturing.

Implementing SAP S/4HANA in manufacturing

Implementing SAP S/4HANA in manufacturing requires meticulous planning, a clear strategy, and adherence to best practices to ensure a successful deployment. **Here are some best practices to follow:**

Comprehensive Planning and Assessment



Conduct a Thorough Needs Analysis:

Identify specific business requirements, pain points, and objectives to ensure the solution aligns with your manufacturing needs.

Assess Current Systems and Processes:

Evaluate existing ERP systems, IT infrastructure, and business processes to understand the scope of the implementation and necessary adjustments.

Engage Stakeholders and Secure Buy-In

Involve Key Stakeholders Early:

Engage stakeholders from various departments (e.g., production, supply chain, finance) to gather input, secure buy-in, and ensure the solution meets cross-functional needs.

Executive Sponsorship:

Ensure strong executive sponsorship to drive the project forward and overcome potential resistance to change.



Choose the Right Implementation Partner



Select Experienced Consultants:

Partner with implementation experts who have a proven track record in deploying SAP S/4HANA in manufacturing environments.

Leverage SAP Best Practices:

Utilize SAP's predefined best practices and templates to streamline the implementation process and reduce risks.

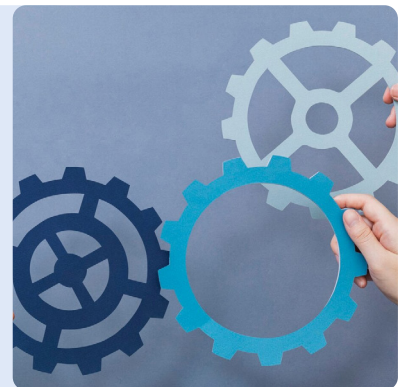
Focus on Change Management

Data Cleansing and Preparation:

Cleanse and standardize data before migration to ensure accuracy and consistency in the new system.

Test Data Migration:

Perform thorough testing of data migration processes to identify and resolve any issues before the final cutover



Adopt a Phased Implementation Approach



Phased Rollout:

Consider a phased implementation approach, starting with core modules and gradually adding additional functionalities. This reduces complexity and allows for incremental improvements.

Pilot Testing:

Conduct pilot tests in specific areas or departments to identify potential issues and make necessary adjustments before full-scale deployment.

Leverage SAP Fiori for Enhanced User Experience

User-Friendly Interfaces:

Utilize SAP Fiori applications to provide an intuitive, user-friendly interface that enhances productivity and user satisfaction.

Customization and Personalization:

Customize Fiori applications to meet specific user roles and requirements, improving overall efficiency and adoption.



Optimize Business Processes



Process Standardization:

Standardize business processes across the organization to ensure consistency and efficiency.

Continuous Improvement:

Use the insights gained from SAP S/4HANA analytics to continuously monitor and improve business processes.

Ensure Robust Security and Compliance

Data Security:

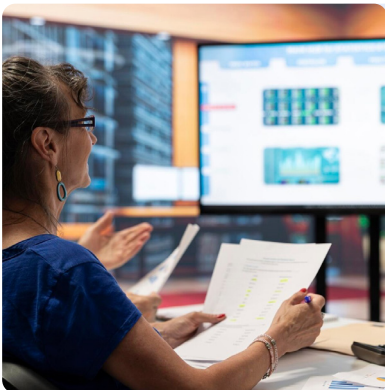
Implement robust security measures to protect sensitive data and ensure compliance with industry regulations.

Compliance Management:

Use SAP S/4HANA's compliance features to manage and monitor regulatory requirements, reducing the risk of non-compliance.



Monitor and Evaluate Performance



Performance Metrics:

Define key performance indicators (KPIs) to monitor the success of the implementation and measure its impact on manufacturing operations.

Continuous Feedback:

Gather feedback from users and stakeholders to identify areas for improvement and make necessary adjustments.

Plan for Future Scalability

Scalable Infrastructure:

Ensure that the chosen infrastructure can scale with your business growth and adapt to future technological advancements.

Future-Proofing:

Stay informed about SAP's roadmap and upcoming features to leverage new functionalities that can further enhance your manufacturing operations.



By following these best practices, manufacturing companies can effectively implement SAP S/4HANA, leading to improved efficiency, better decision-making, and enhanced overall performance.



Conclusion

Stay Ahead with Future-Proof Manufacturing Operations

In conclusion, SAP S/4HANA empowers manufacturing firms to stay ahead with future-proof operations. Designed to evolve with technological advancements and industry requirements, SAP S/4HANA ensures continuous innovation through regular updates and new features that address emerging technologies. This significantly transforms manufacturing operations, driving efficiency, productivity, and overall excellence. With real-time insights, a unified data model, an intuitive user experience, advanced analytics, seamless integration, and continuous innovation, SAP S/4HANA offers a competitive edge in optimizing operations and enhancing decision-making.

Please reach out to Accrete at accrete@acnsol.com/
+1 877-849-5838 for any additional information or help
that you may need.

USA

7116 252nd Avenue NE
Redmond, WA 98053

Noida

The Iconic Corenthum 1st & 2nd floor,
Sector 62, Noida-201301

South Africa

609 Lanseria Corporate Estate, Falcon
Lane, Lanseria, Gauteng

